

# DIEMME

## Velvet

115-150-260-320-430



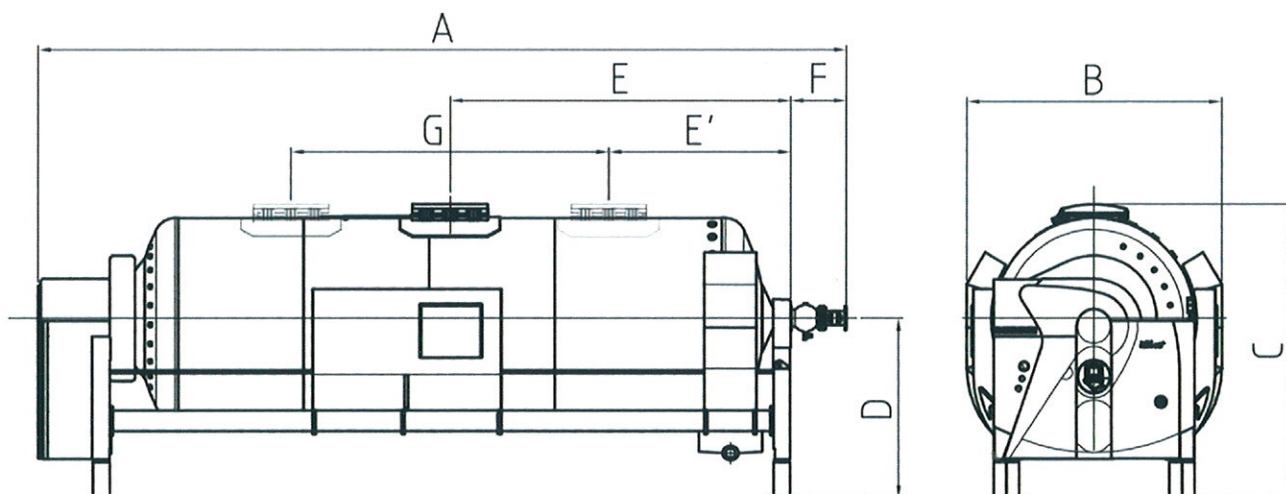
### Velvet range

Presses with high draining capacity thanks to draining channels of last generation. Greatest technical expression in grapes pressing with the best productive and qualitative performances on the juices.

DIEMME S.P.A.  
Via Bedazzo, 19 - 48022 Lugo (Ra) - Italia  
tel. + 39 (0) 545 20611 fax. + 39 (0) 545 20747  
winediv@diemme-spa.com  
www.diemme-spa.com



# DIEMME



VELVET	A (mm)	B (mm)	C (mm)	D (mm)	E (mm)	E' (mm)	F (mm)	G (mm)
VELVET 115	6.664	2.590	2.960	1.888	2.665	1.475	665	2.400
VELVET 150	7.230	2.590	3.052	1.888	2.948	1.585	665	2.750
VELVET 260	8.156	3.050	3.520	2.150	3.322	1.672	665	3.300
VELVET 320	9.656	3.050	3.520	2.150	4.072	2.172	665	3.800
VELVET 430	11.220	3.300	3.605	2.190	4.846	2.846	665	4.000

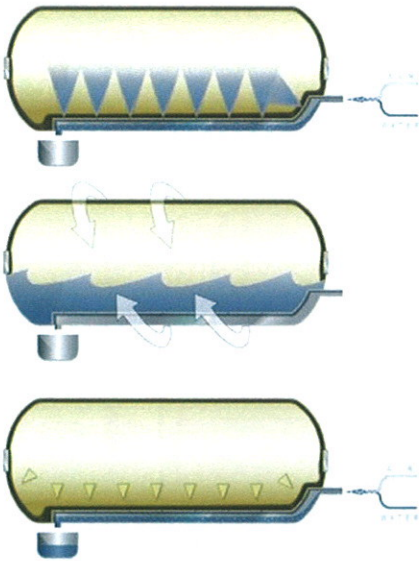
VELVET	Tank volume (lt)	Door dimensions(mmxmm)	Empty weight (kg)	Full weight (kg)	Installed power (kW)
VELVET 115	11.500	700x550	5.200	16.700	10
VELVET 150	15.000	800x600	6.000	21.000	10.5
VELVET 260	26.000	800x600	7.500	33.500	16.5
VELVET 320	32.000	800x600	9.000	41.000	22.5
VELVET 430	43.000	800x600	13.000	56.000	31

VELVET	Filling through door			Filling through axial valve		
	Whole grapes (kg)	Destemmed and crushed grapes(kg)	Fermented grapes(kg)	Whole grapes (kg)	Destemmed and crushed grapes(kg)	Fermented grapes(kg)
VELVET 115	6.000/7.500	15.000/22.000	19.000/26.000	10.500/12.500	25.000/32.000	32.000/45.000
VELVET 150	8.000/10.000	20.000/29.000	25.000/35.000	14.000/17.000	34.000/42.000	42.000/60.000
VELVET 260	12.000/17.000	33.000/48.000	41.000/58.000	25.000/28.000	50.000/78.000	80.000/100.000
VELVET 320	18.000/21.000	40.000/55.000	52.000/75.000	28.000/31.000	70.000/100.000	100.000/125.000
VELVET 430	24.000/28.000	54.000/74.000	70.000/100.000	37.000/41.000	90.000/168.000	130.000/168.000

DIEMME S.P.A.  
 Via Bedazzo, 19 - 48022 Lugo (Ra) - Italia  
 tel. + 39 (0) 545 20611 fax. + 39 (0) 545 20747  
 winediv@diemme-spa.com  
 www.diemme-spa.com

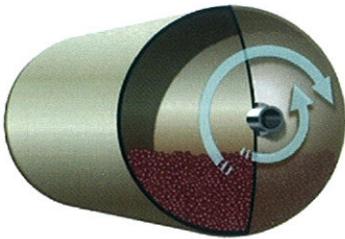


# DIEMME



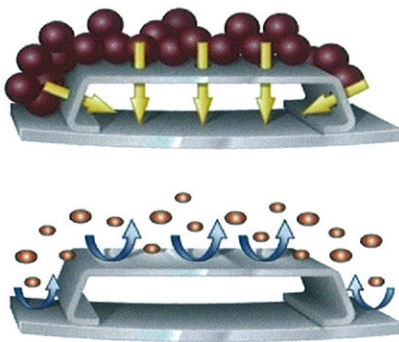
## Automatic washing system Pulse Jet

- Automatic washing system (optional) with air and water inlet from one side, with a centralized outlet for a perfect cleaning of the channels and of the tank.



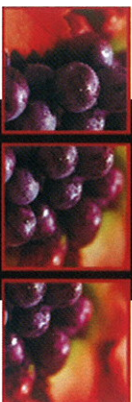
## Rocking System

- Tank oscillation during the filling phase for better product distribution within the tank.

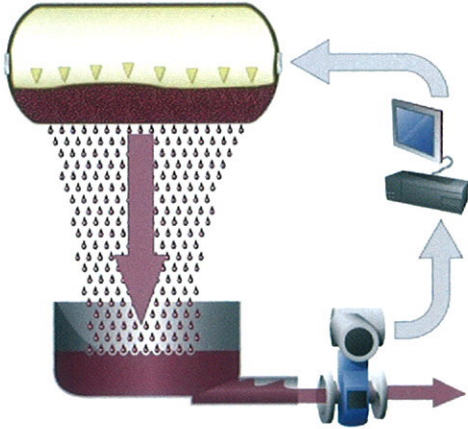


## Efficient drainage with quality product

- New polished drain channels with trapezoidal design have a high draining capacity and self-cleaning function.

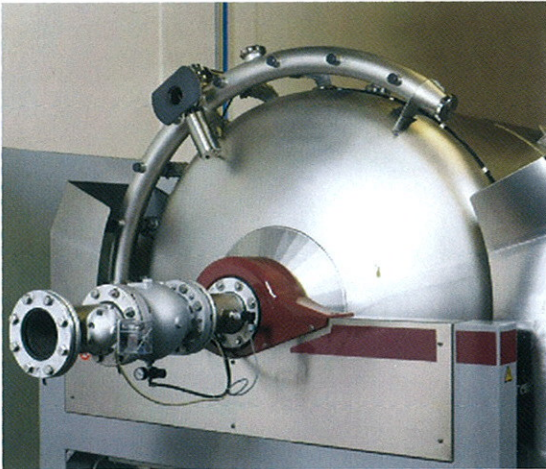


# DIEMME



- **Control panel by means of Touch Screen**
  - FIP Intelligent Program (optional) to optimize the pressing cycle.

## SISTEMA **Neutral<sub>2</sub>**



- Oxygen-free pressing system **Neutral<sub>2</sub>** (optional).

